



**ATELIER DENSIDADES**  
GABINETE DE ARQUITECTURA,  
ENGENHARIA E TÉCNICAS AFINS,  
IMAGENS 3D, DESIGN E DESIGN DE MOBILIÁRIO

CENTRO EMPRESARIAL  
E INDUSTRIAL DE LOULÉ  
CAMPINA DE BAIXO, LOTE 1 - SALA 4  
8100-285 LOULÉ

## SITE VISITATION REPORT – June.2015

SITE VISITATION AND CLARIFICATION OF WORKS ACCORDING TO DETAIL PROJECT

t 00351 289 432 670  
f 00351 289 432 671

info@densidades.pt  
www.densidades.pt

Loulé, 30 June 2015

### Site photos



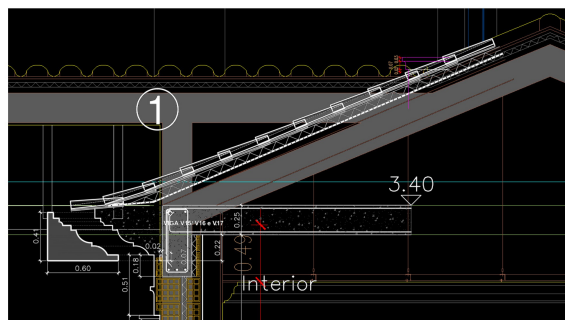
PÁGINA 1 - 2

### Handled Issues:

1 HVAC meeting to re-check project with HVAC supplier of Lux ( no image )

2 Verification and clarification of roof tile detail and model concrete beam above basement window near pool table area ( no image )

- Solved, corrected by structural engineer and revised drawings updated on site



(continues)

DSM9-RAO-150630-003  
RelatorioAcompObra  
Aliceblue-06-2015



**ATELIER DENSIDADES**  
GABINETE DE ARQUITECTURA,  
ENGENHARIA E TÉCNICAS AFINS,  
IMAGENS 3D, DESIGN E DESIGN DE MOBILIÁRIO

CENTRO EMPRESARIAL  
E INDUSTRIAL DE LOULÉ  
CAMPINA DE BAIXO, LOTE 1 - SALA 4  
8100-285 LOULÉ

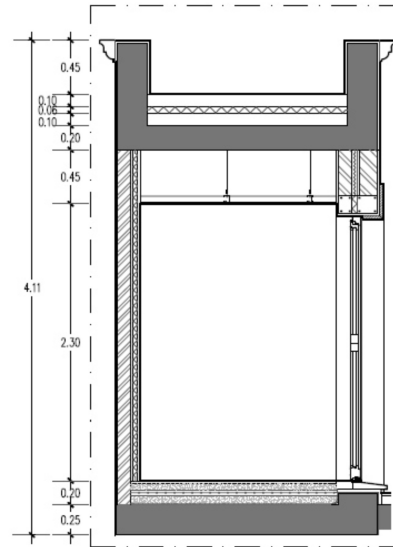
t 00351 289 432 670  
f 00351 289 432 671

info@densidades.pt  
www.densidades.pt

Loulé, 30 June 2015

3 Verification and clarification of Dog Beds ( room 0.17 ), regarding concrete pilars and thermal insulation

- Solved, corrected by structural engineer and revised drawings updated on site



CORTE 0.17-AA

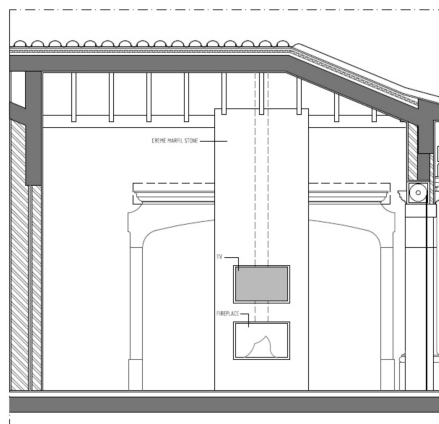
4 Verification and clarification of swimming pool terrace levels to foresee thermal insulation in basement rooms

- Solved, included thermal insulation, raise of terrace level in 5cm ( no image )

5 Alterations and corrections in bar/barbeque area and covered terrace with fireplace, as per meeting with Arch.Richard Burt

- Solved, drawings updated.

PÁGINA 2 - 2



CORTE 0.18-BB



CORTE 0.19-AA